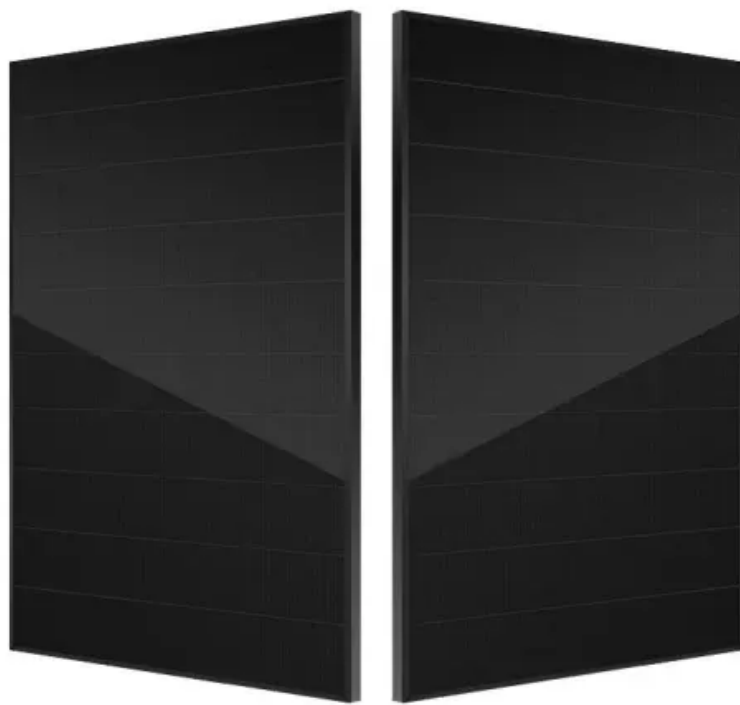


560W photovoltaic panel parameters and specifications



560W photovoltaic panel parameters and specifications



MONOCRYSTALLINE HALF-CUT CELL SOLAR PANEL 560W,

SPECIFICATION: Peak power (Pmax): 560W
Maximum supply voltage (Vmp): 42,40V
Maximum power current (Imp): 13,21A Open circuit voltage (Voc): 50.60V

LR7-60HVH-560M Hi-MO X10 Scientist Solar Panel

560W LONGi Green Energy Technology Co Ltd
LR7-60HVH-560M Hi-MO X10 Scientist solar panel
- specifications, datasheet, warranty information
and free installer quotes.



DataSheet 560W

Optimized electrical design and lower operating current for reduced hot spot loss and better temperature coefficient. 0.55% annual power degradation and 25 year linear power warranty.

[Solar Panel 560W 555W 550W 545W 182mm 144 Half Cells PV Modules](#)

Applying the new-generation high-efficiency PERCIUM+ solar cells, Evo 5 series PV modules achieve more than 23.1% of average mass-produced cell efficiency by improving the passivation process on



182 Mono 560W Technical Data Sheet 2279x1134x35



[Waaree Energies Ltd. Arka Mono PERC Bifacial Solar Panel](#)

Waaree Energies Ltd. is amongst the top Solar Energy Companies and has the country's largest Solar PV Module manufacturing capacity of 12 GW. In addition, it is committed to provide top notch EPC

Dimensions:2279*1134*35mm Mono
Power:560W Characteristics High efficiency solar cell to keep the modules efficiency reach to 21.67%. Lower LID attenuation. Excellent performance



[Trina Vertex 535-560W Datasheet Solar Analytica Verified.pdf](#)

STC: Irrdiance 1000W/m², Cell Temperature 25oC, Air Mass AM1.5. *Measuring tolerance: +-3%. NOCT: Irradiance at 800W/m, Ambient Temperature 20?C, Wind Speed 1m/s. *Please refer to regional

560W Photovoltaic Solar Panel

This 560W Photovoltaic high-power monocrystalline solar panel operates at 21.90% efficiency to maximize the light absorption area. Solar panels are a clean source of energy that use the sun's rays



Bluesun HEX5-560W (BSM560M10-72HPH)

The Bluesun HEX5-560W (BSM560M10-72HPH) Monofacial Shingled is a high efficiency solar panel 560 W power rated 21.7% efficiency, packed in easy to

JAM72D30 MB 560W EN

. IEC 62941: 2019 Terrestrial photovoltaic (PV) modules - Quality system for PV module manufacturing



OR10H560M

It is important to point out, that all technical specifications, information and figures contained in this datasheet are estimated values. Peimar reserves the right to change the technical specifications,

AE_CMD-144BDS_560W-580W_Ver24.1.1

The specifications and characteristics contained in this datasheet may deviate slightly from our actual products due to the product developments and uncertainty of measurement devices. The



Technical Specification

SPECIFICATION: Peak power (Pmax): 560W
Maximum supply voltage (Vmp): 42,40V
Maximum power current (Imp): 13,21A . Open circuit voltage (Voc): 50.60V Short-circuit current (Isc): 13,99A Module

Contact Us

For catalog requests, pricing, or partnerships, please visit:
<https://xaviergphoto.es>