

Area of photovoltaic panels generating electricity



Overview

Here's what's shocking: A single square meter of solar panel can generate anywhere from 150 to 250 watts under ideal conditions. But "ideal" rarely exists in real life.

Area of photovoltaic panels generating electricity



[What do you call the enclosed outdoor area inside an apt?](#)

It's an outside area about 1.5m square that can be entered from inside the apartment through a window-like entetance. It's filled with garbage from apartments in the higher floors. I want

word request

As noted in the answers, "showroom" is the commonly used phrase. But "display area" is probably the best literal description of what it is.

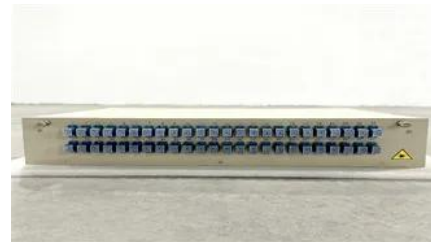


[Land Requirements for Utility-Scale PV: An Empirical Update on](#)

Unlike rooftop PV systems, which have limited or no land-use impacts by virtue of being mounted on existing structures, utility-scale PV plants are, by definition, sited on the ground and in the landscape

single word requests

Here is an image in which the area is marked in green: (NSFW, genitals covered). Please note how the 'string' of the taut adductor muscles separates the groin on the front side of the trunk



[What is that suburban commercial area off the highway called?](#)

What's pictured isn't a rest area, it's a commercial strip that also serves the local

community. A highway rest area exclusively serves travelers, there being no local access to it.

single word requests

an area of land that is not built on, usually in a town or city, sometimes one that is available to buy or rent: Yes, it's two words, but it is the phrase I would expect to hear.



Photovoltaics and electricity

Photovoltaic Cells Convert Sunlight Into Electricity
The Flow of Electricity in A Solar Cell
PV Cells, Panels, and Arrays
PV System Efficiency
PV System Applications
History of PV Systems
The PV cell is the basic building block of a PV system. Individual cells can vary from 0.5 inches to about 4.0 inches across. However, one PV cell can only produce 1 or 2 Watts, which is only enough electricity for small uses, such as powering calculators or wristwatches. PV cells are electrically connected in a packaged, weather-tight PV panel (so See more on eia.gov Published: Oct 1, 2024 nlr.gov)

PVWatts Calculator

Estimates the energy production of grid-connected photovoltaic (PV) energy systems throughout the world. It allows homeowners, small building owners, installers and manufacturers to easily develop

single word requests

Some houses have a little rectangular area just inside the front door. You then walk through that little area to get into the main areas of the house. This little area is well defined with a





[What term means "the area beyond the surrounding area"?](#)

I need to find a word which is a good match for the word "surrounds" (n., the surrounding land or territory), but which instead describes all of much the space not included in the "surrounds".
To

[The name of the area leading to a building's entrance](#)

What are some names for the outside area of a building called, specifically the one leading to its entrance? I know the word "plaza" would come to mind but I'm thinking more of the



[What do you call an outside area that is in the center of a mansion?](#)

I've seen a few mansions designed so that the house is a sort of square where the center part of the square shaped mansion/house contains an outside area.

single word requests

What is the name of the area that is between the nose and the upper lip, circled in figure 1 below? source of face image I have found that the area circled in figure 2, the small indentation under



Contact Us

For catalog requests, pricing, or partnerships, please visit:
<https://xaviergphoto.es>