

Battery solar energy storage cabinet system supply



Battery solar energy storage cabinet system supply



Low battery charge message

The low battery charge message relates to the main battery. On vehicles with stop/start systems and intelligent alternators, the vehicle battery is designed to operate at around 80% SOC, to

Battery Racks & Enclosures

We stock a wide range of racks and enclosures for the varying types of solar power systems. Whether you need to house one battery or 12, we have what you need. We carry high-quality products from



[7 Best Most Reliable Battery Storage Systems for Solar](#)

Uncover the top 7 battery storage solutions that could revolutionize your solar setup and slash your energy costs forever.

Battery issues

I've had both batteries replaced (with the correct models), done a 100 mile trip, overnight smart battery charge, charging voltage is fine, system messages cleared but I am still getting "low



Main Battery Replacement

Since that battery also supplies power to the ECU memory when the car is switched off, as well as powering the stop/start system, don't ignore it.

Like the main battery, Volvo recommend

Battery Recycling for Businesses

Battery Recycling for Businesses Use the chart below to determine how to handle used batteries generated by your business. Batteries that are considered hazardous must be recycled or managed



Main Battery Change

Going to change the service battery in my 15 V40cc D2. Anything I need to be ware of or look out for ??

"Low Battery Charge" HELP

Have the battery checked at dealers - and just using a multimeter on the battery won't show duff cells in the battery. A new battery-cured mine - any decent auto-electric garage could do it.

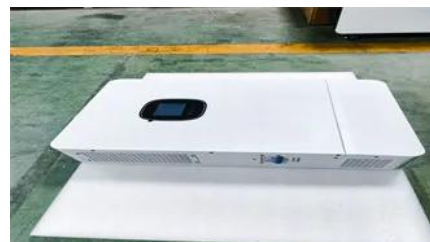


Secondary Battery

My main battery just died, had it replaced with same, and car kept giving me Battery charging, so no stop start. When stop/start worked, it was for about 10 sec, and car would start, with

Household Battery Recycling

Household battery recycling locations Lead-acid batteries, or "automotive type batteries," are banned from disposal. Consumers may bring lead-acid batteries to any Wisconsin retailer that sells these





[Multiple Warning Lights/Error Messages/Battery deterioration](#)

TBH I would look at a replacement battery on the back of that info - but can't you get one from where you bought it? I don't know what a compliance centre is but does the vehicle come with

Low battery charge error , Volvo V40 Forums

Hello everyone, I just bought my first car, a 2014 Volvo V40 T3, and a warning appears on the dashboard that says 'low battery charge.' The car is recently



Solar Battery Storage Systems , Fortress Power

Fortress Power delivers LFP solar battery storage for homes and businesses - 50,000+ installations, 500+ certified installers.

Contact Us

For catalog requests, pricing, or partnerships, please visit:
<https://xaviergphoto.es>