

Communication mobile base station safety distance



Communication mobile base station safety distance



The evidence is clear: Living close to a mobile

This first study of symptoms experienced by people living near base stations shows that, in view of radio protection, the minimum distance of people from mobile phone base stations should not be < 300 m.

Communication

The study of Communication focuses on how people exchange information, ideas, and meaning through various forms of communication, including verbal, written, visual, and digital channels.



What Is Communication? How to Use It Effectively

Communication is sharing messages through words, signs, and more to create and exchange meaning. Feedback is a key part of communication, and can be given through words or

Safe EMF Distance From Cellphone Towers Calculator

This calculator helps you determine safe distances based on tower type (2G to 5G), transmission power, antenna configuration, and safety standards. It is based on



8 Ways You Can Improve Your



What is Communication?

At its foundation, Communication focuses on how people use messages to generate meanings within and across various contexts, and is the discipline that studies all forms, modes, media, and



[What Is Effective Communication? Skills for Work, School, and Life](#)

Effective communication is the process of exchanging ideas, thoughts, opinions, knowledge, and data so that the message is received and understood with clarity and purpose.



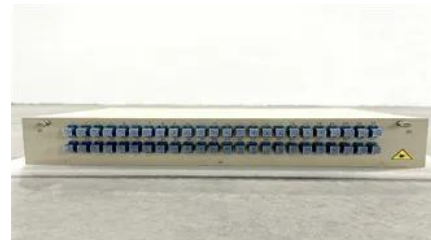
Communication Skills

These eight tips can help you maximize your communication skills for the success of your organization and your career. 1. Be clear and concise. Communication is primarily about word



[How Close Is Too Close to a Cell Phone Tower? Understanding the](#)

How Close Is Too Close? The risk posed by cell towers depends on several factors, including the tower's power, the frequency of the signals, and the distance between the tower and



Communication

Communication is commonly defined as the transmission of information. Its precise definition is disputed and there are disagreements about whether unintentional or failed transmissions are included and

Radiofrequency radiation from nearby mobile phone

One of the main safety principles is creating sufficient distance between the public and the RF sources. This requirement may not be met in certain housing



Human Exposure to Radio Frequency Fields:

Measurements made near typical cellular and PCS cell sites have shown that ground-level power densities are well below the exposure limits

Base stations

Over large distances, the signals must be relayed by a communication network comprising base stations and often supported by a wired network. The power of a base station varies (typically between 10



[What are the 7 Types of Communication with Examples](#)

Communication is the lifeblood of human interaction, connecting people from all walks of life. It is the art of exchanging information and ideas between individuals or groups through various

[What is Communication: Meaning, Types, Importance and Barriers](#)

Communication is the process of exchange of information, ideas, thoughts, or feelings among individuals or groups. It involves sending and receiving messages through different means, such as verbal,





[Communication , Definition, Types, Examples, & Facts , Britannica](#)

Communication, the exchange of meanings between individuals through a common system of symbols. This article treats the functions, types, and psychology of communication.



[5G Cell Tower Distance: How Close Is Too Close? \(Expert Safety\)](#)

This comprehensive guide examines the science behind cell tower distance recommendations, international safety guidelines, and practical steps for assessing and protecting your home from



COMMUNICATION Definition & Meaning

The meaning of COMMUNICATION is the act or process of using words, sounds, signs, or behavior to express or exchange information or to express thoughts, feelings, etc., to another person.



What Is a Safe Distance From a Cell Tower?

Learn how physics, regulatory standards, and measured RF-EMF levels define safety near cell towers, addressing public health concerns.



What Distance is Safe?

Based on findings like these, a minimum safety distance of 1/4 mile (1320 feet) might be considered prudent. And again, individuals with EMF hypersensitivity

Contact Us

For catalog requests, pricing, or partnerships, please visit:
<https://xaviergmphoto.es>