

Do communication base stations need batteries

智慧能源储能系统
Intelligent energy storage system

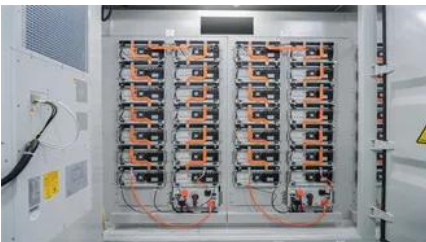


Do communication base stations need batteries



Pneumonia

Pneumonia is an infection that inflames the air sacs in one or both lungs. The air sacs may fill with fluid or pus (purulent material), causing cough with phlegm or pus, fever, chills, and



Understanding Backup Battery Requirements for

Telecom base stations require reliable backup power to ensure uninterrupted communication services. Selecting the right backup battery is



Telecom Towers and Remote Base Stations

Lithium Iron Phosphate (LiFePO4) batteries are a preferred choice for telecom applications due to their superior characteristics: High Performance:



[HDL cholesterol: How to boost your 'good' cholesterol](#)

So do most fried foods and some margarines. Also limit saturated fat, found in meats and full-fat dairy products. If you smoke, find a way to quit. Smoking lowers HDL levels, especially in



[Global Communication Base Station Battery Trends: Region-Specific](#)

Integrated base stations are typically larger and require higher capacity batteries, while distributed base stations, being smaller and more numerous, present different power needs.

Crohn's disease

While they do not cause Crohn's disease, they can lead to inflammation of the bowel that makes Crohn's disease worse. Complications Crohn's disease may lead to one or more of the



Restless legs syndrome

Restless legs syndrome can begin at any age and tends to get worse with age. It can disrupt sleep, which interferes with daily activities. RLS also is known as Willis-Ekbom disease.



[Complete Guide to 5G Base Station Construction . Key](#)

A typical communication base station combines a cabinet and a pole. The cabinet houses critical components like main base station equipment,



Urinary tract infection (UTI)

Learn about symptoms of urinary tract infections. Find out what causes UTIs, how infections are treated and ways to prevent repeat UTIs.



Multiple sclerosis

Multiple sclerosis is a disease that causes breakdown of the protective covering of nerves. Multiple sclerosis can cause numbness, weakness, trouble walking, vision changes and other



[10 ways to control high blood pressure without medication](#)



Chart of high-fiber foods

The suggested amount of daily fiber depends on your age and how many calories you take in each day. Current dietary guidelines for Americans suggests that people age 2 and older get

If you have high blood pressure, you may wonder if you need to take medicine to treat it. But lifestyle changes also play an important role in treating high blood pressure. Controlling blood



[Communication Batteries: Why Telecom Base Stations Have Unique](#)

This article clarifies what communication batteries truly mean in the context of telecom base stations, why these applications have unique requirements, and which battery technologies are

[Why 5G Base Stations Need Energy Storage Batteries: A](#)

As telecom operators race to deploy faster networks, energy storage batteries have become the unsung heroes powering this revolution. Let's explore why these batteries matter and how they're reshaping



How Communication Base Station Energy Storage

Lithium batteries have become a key component in powering these stations, ensuring they operate smoothly even during power outages or grid

WHY DO CELLULAR BASE STATIONS HAVE BACKUP BATTERIES

Why do 5G base stations need backup batteries? As the number of 5G base stations, and their power consumption increase significantly compared with that of 4G base stations, the demand for backup



Statin side effects: Weigh the benefits and risks

The body needs cholesterol. But having too much cholesterol in the blood raises the risk of heart attacks and strokes. Statins block an enzyme the liver needs to make cholesterol. This

What Does a Base Station Do and Why Is It Essential

From making a phone call in a busy city to streaming videos in remote villages, the ability to stay connected relies on one critical piece of



Medical Diseases & Conditions

Explore comprehensive guides on hundreds of common and rare diseases and conditions from the experts at Mayo Clinic.

Telecom Base Station Backup Power Solution: Design

Among various battery technologies, Lithium Iron Phosphate (LiFePO4) batteries stand out as the ideal choice for telecom base station



Contact Us

For catalog requests, pricing, or partnerships, please visit:
<https://xaviergmphoto.es>