

Energy storage system electrical control cabinet installation



Energy storage system electrical control cabinet installation



2024 Electric Service Requirements Manual (LADWP)

This section contains specifications to assist customers in designing self-generating and energy storage systems intended to operate in parallel with the Department's electric distribution system.

[Eaton xStorage 250 1000 kW BESS Installation and Operation](#)

This manual contains important instructions that you should follow during installation and maintenance of the Battery Energy Storage System and batteries. Please read all instructions before operating the



RESIDENTIAL ENERGY STORAGE SYSTEMS HANDOUT Rev:

All energy storage systems (ESS) shall comply with the applicable provisions of the California Residential code R328, California Electrical Code 706 and all other applicable codes.

[Energy Storage Cabinet Installation Steps: A Hands-On Guide for](#)

Whether you're a solar-powered homeowner tired of watching excess energy vanish into thin air or a factory manager looking to cut peak demand charges, energy storage cabinet installation





[Safety Best Practices for the Installation of Energy Storage](#)

Best practices can make installation of energy storage safe. The CPUC offers links to the most relevant best practices and standards from a wide range of sources on this page.

[Installation Manual Energy Storage System \(ESS\) NEOSUN](#)

Step 13: Hang the inverter onto the mounting panels, adjust the entire system and ensure that the battery and the inverter have been securely hung onto the panels and brackets.

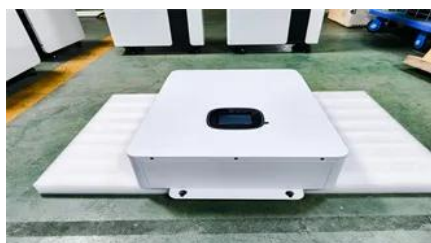


[Step-by-Step Solar Battery Cabinet Installation Guide](#)

Follow this detailed guide for a smooth installation of your solar battery cabinet and maximize renewable energy use

INSTALLATION MANUAL Energy Storage System

If a system fault occurs immediately after starting the system, check the error code on the Smart Energy Box (SE Box) display and follow the solution described in the manual.



[SigenStack Energy Storage System Installation Guide](#)

o You are advised to install the equipment in a location where you can easily access, install, operate, maintain it, and view the indicator status. o Do not install the equipment in a smoky, flammable, or

Contact Us

For catalog requests, pricing, or partnerships, please visit:
<https://xaviergmphoto.es>