

# How big an inverter should I use for a 100AH battery



## Overview

---

A 100Ah battery can support a 1000W inverter for roughly one hour.

## How big an inverter should I use for a 100AH battery

---



### What Size Inverter Do I Need for a 100Ah Battery?

A 100Ah battery typically supports an inverter size up to about 1000 watts for standard applications, balancing efficient runtime and battery health. Selecting the right inverter size depends

### What Inverter Size is Best for a 100Ah Battery?

A 12V 100Ah battery can reasonably power an inverter up to 1000W-1200W for short periods. For continuous loads, 500W-800W is more efficient and battery-friendly.

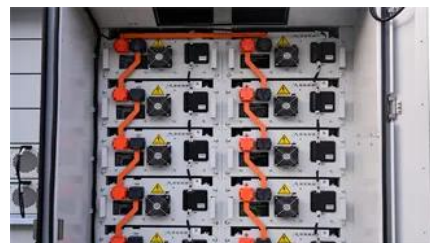


### 12V 100Ah Lithium Battery: Best Inverter Size

A single 12 Volt 100Ah lithium battery pairs best with a 1000W pure sine wave inverter because it fits the current limits most batteries can deliver

### People , Bjarke Ingels Group

Meet the team at Bjarke Ingels Group (BIG). Explore our partners, architects, and specialists shaping the future of architecture and design.



### The Mountain , Bjarke Ingels Group

The Mountain is the second generation of the BIG-designed VM Houses: same client, same size, and same street. The program, however, is two

thirds parking and one third living. When asked to design

### Architecture , Bjarke Ingels Group

Explore architecture projects by Bjarke Ingels Group.



### Biosphere , Bjarke Ingels Group

Bjarke Ingels - Founder & creative director, BIG "We designed our addition to the Treehotel - the Biosphere - to create a unique experience for hotel guests, which takes inspiration from the qualities

### NYPD 40th Precinct , Bjarke Ingels Group

Bjarke Ingels - Founder and Creative Director, BIG Amenities for the officers provide spaces for relaxation and exercise, including lockers, showers, and a stress reduction courtyard with separate



### Google Bay View , Bjarke Ingels Group

Google Bay View is Google's first-ever ground-up campus with the mission to operate on carbon-free energy 24 hours a day, seven days a week by 2030. The buildi

### CityWave , Bjarke Ingels Group

CityWave's two office buildings are connected by a new public park and a sweeping 140-m-long roof clad entirely in photovoltaic tiles - one of the largest





### [Best Inverters Compatible With 100Ah Battery for RVs.](#)

This article reviews five top inverters and battery combos optimized for 100Ah batteries, considering power output, battery type compatibility, safety

### **Sizing the Right Inverter for 100ah Battery**

In this guide, we'll walk you through what size inverter works best with a 100Ah battery, how long your battery will last, and how to size your



### [What size inverter do you need for a 100ah battery?](#)

What size inverter for a 100Ah battery? For appliances that use a relatively low amount of power, such as laptops, lights, TVs, and small fridges, a

### **CapitaSpring , Bjarke Ingels Group**

The 280 m tall CapitaSpring is located in the heart of Singapore's financial district on the site of a 1980s car complex and a hawkers market. As the second tallest tower in Singapore, the 93,000 m<sup>2</sup>, 51



### [Opera and Ballet Theatre of Kosovo , Bjarke Ingels Group](#)

BIG proposes a simple and pragmatic arrangement of the performance venues draped in a soft, undulating exterior skin of photovoltaic tiles. The theatre's form is reminiscent of the free-flowing

### [What size inverter can I run off a 100Ah lithium battery?](#)

A 100Ah lithium battery can safely power a 1000W inverter for continuous use. For short bursts, a 2000W inverter may work, but it will drain the battery faster and isn't recommended for extended



### [What Size Inverter Can I Run Off a 100Ah Lithium Battery?](#)

In conclusion, when using a 100Ah lithium battery, selecting an inverter rated up to 1000 watts for continuous loads is generally advisable. This ensures reliable performance while

### **Careers , Bjarke Ingels Group**

BIG has grown globally since 2005, with 60+ buildings in 10+ countries. Join our 700+ person team shaping the future of architecture and design challenges.



### [What Size Inverter Can I Run Off a 100Ah Battery? Maximize Your](#)

What Size Inverter Is Safe to Use with a 100Ah Battery? The safe inverter size to use with a 100Ah battery is typically between 300W to 1200W, depending on your power needs and the

## **Contact Us**

---

For catalog requests, pricing, or partnerships, please visit:  
<https://xaviergmphoto.es>