

How much MWh of energy is stored on the power generation side



Overview

For example, if a power plant with a single generator that has an electricity generation capacity of 100 Megawatts (MW) operates at that capacity continuously for 24 hours, it will generate 2,400 megawatthours (MWh) of electricity.

How much MWh of energy is stored on the power generation side



Electricity and Energy Storage

Any systems are limited in the total amount of energy they can store. Their energy capacity is expressed in megawatt-hours (MWh), and the power, or

[Electricity generation, capacity, and sales in the United States](#)

Utility scale includes electricity generation and capacity of electric power plants with at least 1,000 kilowatts, or 1 megawatt (MW), of electricity-generation capacity.



Electric Generation Capacity and Energy

These tables and corresponding charts are provided to show the total installed electric generation nameplate capacity of all power plants one megawatt (MW)

Frequently Asked Questions (FAQs)

For example, if a power plant with a single generator that has an electricity generation capacity of 100 Megawatts (MW) operates at that capacity continuously for 24 hours, it will generate



What does much mean?

Much is an adjective that refers to a large quantity, amount, or degree of something. It indicates a substantial extent or level of

something, generally implying a significant or notable difference or

MUCH Definition & Meaning

The meaning of MUCH is great in quantity, amount, extent, or degree. How to use much in a sentence.



Electricity Generation

Measures a power plant's utilization over a given period of time (usually a year); calculated as the ratio between the amount of energy produced and the

MUCH , English meaning

MUCH definition: 1. a large amount or to a large degree: 2. a far larger amount of something than you want or need. Learn more.

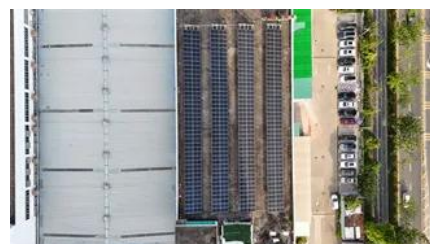


[MUCH definition in American English , Collins English Dictionary](#)

You use much to indicate the great intensity, extent, or degree of something such as an action, feeling, or change. Much is usually used with 'so,' 'too,' and 'very,' and in negative clauses with this meaning.

Much Definition & Meaning , YourDictionary

Much definition: Great in quantity, degree, or extent.



Energy storage for electricity generation



Understanding MW vs MWh: Power and Energy Explained

Demystifying megawatts (MW) and megawatt-hours (MWh): this guide explains key energy concepts, capacity factors, storage durations, and efficiency differences



Electricity

Therefore, we present below, electricity generation output by fuel type and generator type. Since the generator/fuel mix of utilities varies significantly by

In 2022, the United States had four operational flywheel energy storage systems, with a combined total nameplate power capacity of 47 MW and 17 MWh of energy capacity.



Electricity explained

Note: MW = megawatts, MWh = megawatthours, KW = kilowatts, and kWh = kilowatthours. Total may not equal 100% because of independent rounding. 1 Utility-scale power plants have at



Contact Us

For catalog requests, pricing, or partnerships, please visit:
<https://xaviergmphoto.es>