

How much wind power is generated throughout the day



How much wind power is generated throughout the day



How Much Power Does A Wind Turbine Produce Per Day

Discover how much power a wind turbine produces daily, with averages between 600-800 kWh. Learn key factors that influence energy output and future trends.

How Many Kwh Does A Wind Turbine Generate Per Day

Wind turbines can generate a range of 1. 8-90 kWh of energy per day, depending on factors such as wind speed, blade size, and turbine design.



How Many kWh Does a Wind Turbine Produce Per Day?

This article explores the daily electricity production of wind turbines, examining the fundamental processes involved and the various factors that influence their output.

Power Generated by One Wind Turbine: How Much

On a windy day, one turbine can generate massive amounts of power. On calm days, output may drop close to zero. This variability is normal for wind turbine



Harnessing Wind Power: How Much Electricity Can a



Discover the factors affecting wind turbine production, learn how to calculate electricity output, and explore real-world examples of wind farm

How Much Power Does a Wind Turbine Produce Per

Q: How much power does a wind turbine produce per day on average? A: On average, a wind turbine can produce anywhere from 1,500 to



Much Definition & Meaning , YourDictionary

Much definition: Great in quantity, degree, or extent.

What does much mean?

Much is an adjective that refers to a large quantity, amount, or degree of something. It indicates a substantial extent or level of something, generally implying a significant or notable difference or



[How Much Power Does a Wind Turbine Produce Per Day?](#)

On average, a modern utility-scale wind turbine can produce approximately 3 to 12 megawatt-hours (MWh) of electricity per day, depending on factors like wind speed, turbine size, and

[Wind Turbine Power Generation - Day vs. Night Production Rates](#)

Discover how wind turbine efficiency varies from day to night and optimize your energy



production with our insightful guide.

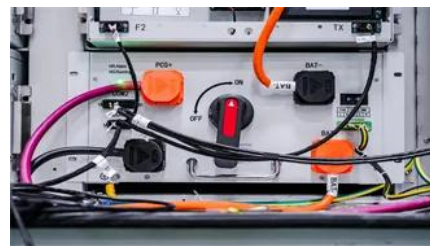


[How much electricity can a wind turbine generate per day?](#)

The specific values must be determined based on the actual wind conditions data of the wind turbine model, installation location, and maintenance level, as there are significant differences

MUCH Definition & Meaning

The meaning of MUCH is great in quantity, amount, extent, or degree. How to use much in a sentence.



How Much Energy Does a Wind Turbine Produce?

Discover how much energy a wind turbine can produce per day and per year. Learn about the benefits of wind energy and its impact on the

[MUCH , definition in the Cambridge English Dictionary](#)

We use the quantifiers much, many, a lot of, lots of to talk about quantities, amounts and degree. We can use them with a noun (as a determiner) or without a noun (as a pronoun).



much determiner

Definition of much determiner in Oxford Advanced Learner's Dictionary. Meaning, pronunciation, picture, example sentences, grammar, usage notes, synonyms and more.

Contact Us

For catalog requests, pricing, or partnerships, please visit:
<https://xaviergmphoto.es>