

How to transform the energy management system of communication base stations



Overview

Modern base stations, routers, and switches are designed to consume less power while maintaining performance. Replacing outdated equipment with high-efficiency alternatives can result in significant energy savings over time. Dynamic power scaling is another effective technique.

How to transform the energy management system of communication



[Energy-efficiency schemes for base stations in 5G heterogeneous](#)

In today's 5G era, the energy efficiency (EE) of cellular base stations is crucial for sustainable communication. Recognizing this, Mobile Network Operators are actively prioritizing EE for both

[Optimization Control Strategy for Base Stations Based on](#)

Abstract: With the maturity and large-scale deployment of 5G technology, the proportion of energy consumption of base stations in the smart grid is increasing, and there is an urgent need to reduce



Adaptive Energy Management System for Green and

Thus, this paper proposes an Adaptive Model Predictive Control (AMPC)-based Energy Management System (EMS) designed to optimize

Low-Power Design Strategies for 5G Base Stations

As 5G technology expands, the number of 5G base stations is growing rapidly. Compared with 4G base stations, 5G offers higher throughput and lower latency but also increases power



[Improving energy resilience in cellular base](#)



[stations and critical](#)

This article comprehensively analyzes each dimension, identifies existing research gaps, and proposes an integrated energy-routing and control structure that ensures uninterrupted operation

Transform

syn: transform, convert mean to change one thing into another. transform means to radically change the outward form or inner character: a frog transformed into a prince; delinquents transformed into



TRANSFORM Definition & Meaning , Dictionary

TRANSFORM definition: to change in form, appearance, or structure; metamorphose. See examples of transform used in a sentence.

[TRANSFORM , definition in the Cambridge English Dictionary](#)

TRANSFORM meaning: 1. to change completely the appearance or character of something or someone, especially so that. Learn more.



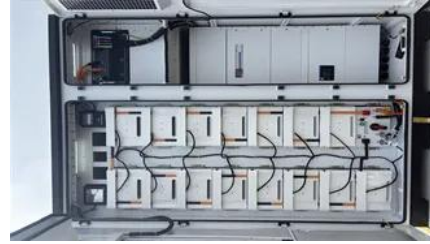
[How FSU Helps Telecom Operators Save Millions in Electricity Costs](#)

Discover how AI-powered FSUs reduce telecom energy costs by 20%+, improve efficiency, and enable predictive maintenance in 5G base stations.

[Power Management Strategies in Telecom](#)

[Infrastructure](#)

Explore top power management strategies in telecom infrastructure to boost efficiency, reduce costs, and ensure reliable network performance.



[Energy Saving and Digital Management for 5G Base Stations](#)

The described energy saving and digital management approach has been deployed at multiple sites, with reported average energy savings exceeding 20% and operations efficiency

[Telecom Base Station Energy Storage Systems: Workflow and Value](#)

Energy storage for telecom base stations is evolving toward higher efficiency, lower cost, and deeper integration with renewable energy and intelligent networks.



Transform Definition & Meaning , YourDictionary

Transform definition: To change markedly the appearance or form of.

[Powering 5G Base Stations with Wind and Solar Energy Storage: A](#)

Discover how renewable energy solutions are transforming telecom infrastructure. This article explores the integration of wind and solar energy storage systems with 5G base stations, offering cost



[transform , Dictionaries and vocabulary tools for](#)



[English language](#)

Definition of transform. English dictionary and integrated thesaurus for learners, writers, teachers, and students with advanced, intermediate, and beginner levels.

TRANSFORM Definition & Meaning

transform, metamorphose, transmute, convert, transmogrify, transfigure mean to change a thing into a different thing. transform implies a major change in form, nature, or function.



CSS transform property

Definition and Usage The transform property applies a 2D or 3D transformation to an element. This property allows you to rotate, scale, move, skew, etc., elements. Show demo

[TRANSFORM definition in American English. Collins English Dictionary](#)

To transform someone or something means to change them completely. A big, happy smile transformed her face.



transform

The transform CSS property lets you rotate, scale, skew, or translate an element. It modifies the coordinate space of the CSS visual formatting model.

transform verb

Definition of transform verb in Oxford Advanced Learner's Dictionary. Meaning, pronunciation,

picture, example sentences, grammar, usage notes, synonyms and more.



Contact Us

For catalog requests, pricing, or partnerships, please visit:
<https://xaviergmphoto.es>