

Is power supply equipment considered energy storage

GRADE A BATTERY

LiFePO₄ battery will not burn when overcharged, over discharged, overcurrent or short circuited and can withstand high temperatures without decomposition.



Is power supply equipment considered energy storage



[Running Python scripts in Microsoft Power Automate Cloud](#)

I use Power Automate to collect responses from a Form and send emails based on the responses. The main objective is to automate decision-making using Python to approve or reject the

formatDateTime in Power Automate Desktop

You are confusing Power Automate with Power Automate Desktop. The link you provide is for Power Automate, so those functions won't work in the PADesktop. There is an action named



[How can I use "e" \(Euler's number\) and power operation?](#)

How can I write $1 - e^{(-value1^{2/2} * value2^{2})}$ in Python? I don't know how to use power operator and e.

Energy storage for electricity generation

An energy storage system (ESS) for electricity generation uses electricity (or some other energy source, such as solar-thermal energy) to charge an energy storage system or device, which



[Power Query code to refer to another query \(and how buffering works\)](#)

Is this just part of the building process? Or If I have one query A that loads across the network

and 5 follow up queries that refer to query A will power query / excel be reading the across

UPS vs. ESS - IAEI Magazine

A UPS is designed and intended to use stored energy to provide standby emergency power to specific mission-critical loads during a grid failure. In contrast, an ESS stores energy -



How to Read CSV file using Power Automate?

You can retrieve the contents of the CSV file using the Get file content action in Power Automate/Microsoft Flow, and then using the Parse CSV action to transform the file contents into a

Power BI: excluding a visual from a slicer

On the Power BI Desktop menu, select the Format menu under Visual Tools, and then select Edit interactions. You need to have the slicer selected. Only then you see the according Filter



Data Centers and Their Energy Consumption:

Currently, there are no legally binding energy standards that apply explicitly to operation of data centers in the private sector. For use within the

[Technologies and economics of electric energy storages in power](#)

Classified by the form of energy stored in the system, major EES technologies include



mechanical energy storage, electrochemical/electrical storage, and the storage based on alternative

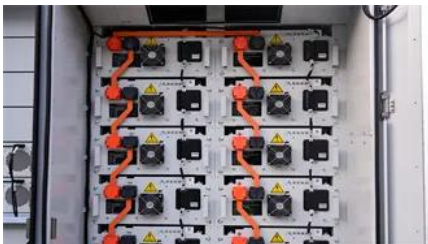


What are the power supply and energy storage

By utilizing smart inverters, which blend power supply functions with energy storage capabilities, users can seamlessly convert and store energy

[Energy Storage Technologies for Modern Power Systems: A Detailed](#)

Energy storage technologies can potentially address these concerns viably at different levels. This paper reviews different forms of storage technology available for grid application and



[How to force Power BI service to use Local timezone](#)

Both approaches work OK in Power BI desktop report, However once I published to Power BI service and after several refreshes (initially it was NZ time), the time turn back to UTC time. I don't

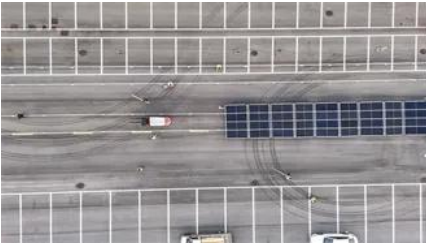
[Power Automate - Some SharePoint List Columns Not Appearing in](#)

I'm working on a Power Automate flow that updates items in a SharePoint Online list. However, I'm facing an issue where certain columns (including Person/Group fields) are not



Electricity Storage , US EPA

About Electricity Storage Electricity Storage in



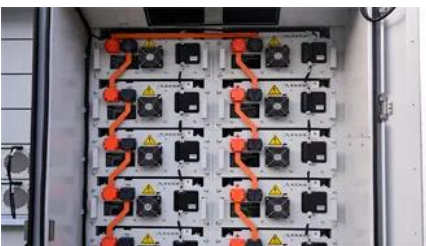
The United States Environmental Impacts of Electricity Storage
The electric power grid operates based on a delicate balance between supply (generation) and demand (consumer use). One way to help balance fluctuations in electricity supply and demand is to store electricity during periods of relatively high production and low demand, then release it back to the electric power grid during period. See more on epa.gov Department of Energy

How It Works: Electric Transmission - Department of Energy

While substations are used for several distinct system functions, most utilize electric power transformers to adjust voltage to match varied voltage requirements along the supply chain.

What Is Energy Storage

In power supplies, energy storage devices are not only used to store energy for use, when demanded by the load, but also for filtering, meeting



Grid energy storage

Energy from fossil or nuclear power plants and renewable sources is stored for use by customers. Grid energy storage, also known as large-scale energy storage,

Extract Value from Array in Power Automate

Extract Value from Array in Power Automate
Asked 1 year, 5 months ago Modified 1 year ago
Viewed 8k times



Contact Us

For catalog requests, pricing, or partnerships, please visit:
<https://xaviergmphoto.es>