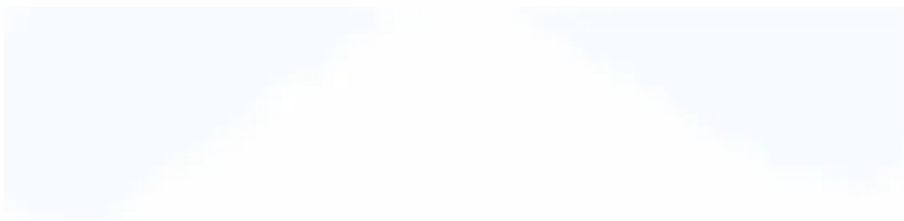


New 1500V Server Rack for Battery Swapping Stations



New 1500V Server Rack for Battery Swapping Stations



How to open link in a new tab in HTML?

Note I previously suggested blank instead of _blank because, if used, it'll open a new tab and then use the same tab if the link is clicked again. However, this is only because, as GolezTrol

When to use "new" and when not to, in C++?

You should use new when you wish an object to remain in existence until you delete it. If you do not use new then the object will be destroyed when it goes out of scope.



[Difference between 'new operator' and 'operator new'?](#)

A new expression is the whole phrase that begins with new. So what do you call just the "new" part of it? If it's wrong to call that the new operator, then we should not call "sizeof" the sizeof

[Design and optimization of electric vehicle battery swapping stations](#)

The initial phase involves determining the optimal battery quantity based on EVs arrival data, with the aim of optimizing the business margins of the battery swapping station.



How does the new operator work in JavaScript?

The new operator uses the internal [] method,



and it basically does the following: Initializes a new native object Sets the internal [] of this object, pointing to the Function prototype

[Unity: Conflict between new InputSystem and old EventSystem](#)

You probably tried to import a new input system package for multiple input devices compatibility. These type of errors are due to conflict between old and new input system packages



1500 V Battery Energy Storage Reference Design

This reference design fits stackable high-voltage battery energy storage systems used in large scale utility solutions, industrial and commercial UPS as well as

[Up to 1500V Stackable Battery Management Unit Reference](#)

This design supports both daisy-chain and controller area network (CAN) interfaces for a stackable communication up to 1500V battery energy storage systems. These features make this reference



[Move the most recent commit \(s\) to a new branch with Git](#)

A graphical version manager where you would just add a tag for the new branch without dealing with what seems to me obscure and archaic syntax would be such a relief. My kingdom and

What is the 'new' keyword in JavaScript?

The new keyword in JavaScript can be quite confusing when it is first encountered, as people tend to think that JavaScript is not an object-oriented programming language. What is it? What problems

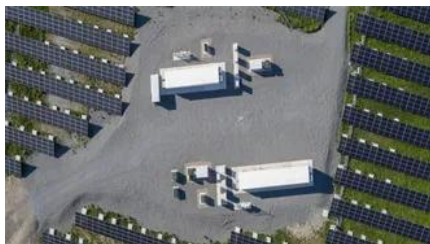


[New site design and philosophy for Stack Overflow: Starting February](#)

Ah, but new experts will rise up and embrace the new, friendly Stack Overflow that they have always wanted. And maybe rediscover the same things the bitter, hateful old guard found.

Push local Git repository to new remote including all branches and tags

Whether you push all the branches or just some of them, Git will perform the entire operation without creating any new local branches, and without making changes to your working



FPR-ESS-5015kWh-L-1500V

The FPR-ESS-5015kWh-L-1500V is perfect for large-scale applications, including grid stabilization, renewable energy integration, and industrial power management.

Energy Rack TM

Fast, Scalable The EnerVenue Energy Rack is the ideally sized building block for 1500 Vdc and 1000 Vdc energy storage systems. It leverages EnerVenue's proven technology by combining Energy





[How do I push a new local branch to a remote Git repository and track](#)

How do I: Create a local branch from another branch (via git branch or git checkout -b). Push the local branch to the remote repository (i.e. publish), but make it trackable so that git pull and

Automatic Battery Swapper

This project focuses on developing a fully autonomous battery-swapping station for electric vehicles (EVs), eliminating the need for manual



Contact Us

For catalog requests, pricing, or partnerships, please visit:
<https://xaviergmphoto.es>