

Patent for communication base station inverter



Overview

The invention provides a communication base station, which is used for realizing the further height hanging of a communication antenna so as to enlarge the network coverage range, simultaneously solving the communication of the land and offshore wind power and reducing the.

Patent for communication base station inverter



WO/2025/013952 USER EQUIPMENTS, BASE STATIONS, AND

WO2025013952 - USER EQUIPMENTS, BASE STATIONS, AND COMMUNICATION METHODS. A method performed by a user equipment (UE) is described.

US20130321989A1

In a base station 170 (hereinafter, abbreviated as a base station 170) illustrated in FIG. 12, the Peltier element 90 is mounted to an inner wall surface of the communication channel 64.



Applying for Patents , USPTO

To apply for a patent, you must file an application and pay required fees. You may wish to find a patent attorney or agent to help draft the description of the invention and claims, and any required drawings.

Home , Open Data Portal

The Open Data Portal (ODP) is USPTO's data platform that empowers you to discover and easily extract USPTO data in one place for free.

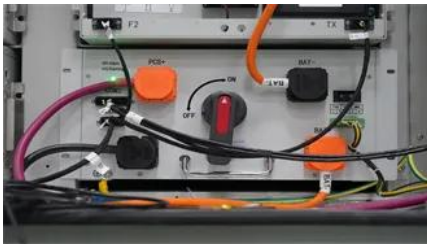


Mobile communication system, base station and

The invention relates to a mobile communication system, a base station and an interference removal method.

WO2023105803A1

When a fixed communication device with terminal functions such as a wireless relay device is blocked from communicating with a base station due to obstacles, etc., BFR (Beam Failure



Search USPTO.gov , USPTO

Search Find out how to protect intellectual property in other countries. Find upcoming programs related to IP policy and international affairs

Patent essentials , USPTO

What is a patent? A U.S. patent gives you, the inventor, the right to "exclude others from making, using, offering for sale, or selling" an invention or "importing" it into the U.S. A plant patent



Patent Basics , USPTO

Patent Basics If you're new to the process of protecting your rights to your invention by applying for a patent, you're in the right place. This page will direct you to everything you need to

Patents , USPTO

Find out how to apply for and maintain a patent in the U.S., and learn about helpful resources.



INVERTER CIRCUIT, DIGITAL-TO-ANALOG



CN111836120A

The invention relates to the technical field of communication, in particular to a communication base station.



Patent Public Search , USPTO

The Patent Public Search tool is a web-based search application for patents and patent application publications. Patent Public Search has two user-selectable modern interfaces that



Search

Search for a patent application Search by application number, patent number, PCT number, publication number or international

CONVERSION

The inverter circuit 100 comprises two transistors 140-1 and 140-2 of a first conductivity type. In the example of Fig. 1, the transistors 140-1 and 140-2 are p-type (p-channel) transistors.



Patent Public Search Basic , USPTO

Patent Public Search Basic (PPUBS Basic) Quick lookup Patent or Publication number For example: 0123456 or 20210123456 Search



BASE STATION DEVICE, TERMINAL DEVICE AND

In a case of uplink radio communication (radio communication from the terminal apparatus 1 to the base station apparatus 3), the PCCH is used to transmit Uplink Control Information (UCI).



design registration number.



Base station and communication device

A base station according to an embodiment of the present invention has a first cell in a licensed band and a second cell in an unlicensed band. The base station is provided with a control

TERMINAL, BASE STATION, AND COMMUNICATION METHOD

One non-limiting and exemplary embodiment facilitates providing a terminal, a base station, and a communication method each capable of improving transmission efficiency of a



Contact Us

For catalog requests, pricing, or partnerships, please visit:
<https://xaviergmphoto.es>