

Size of rooftop photovoltaic panels



Size of rooftop photovoltaic panels



Standard Solar Panel Sizes And Wattages (100W)

The goal here is to get to the average solar panel size by wattage. You can find typical dimensions of 100W, 150W, 170W, 200W, 200W, 220W, 300W, 350W,

Difference between size and length methods?

What is the difference between `.size()` and `.length` ? Is `.size()` only for arraylists and `.length` only for arrays?



What Are the Common Solar Panel Sizes?

Our guide on solar panel sizes covers standard dimensions, along with their power output and ideal applications.

[Solar Panel Size & Dimensions Guide 2025, Complete Specs](#)

Complete guide to solar panel sizes and dimensions. Compare 60-cell vs 72-cell panels, weights, roof space requirements, and installation specs for 2025.

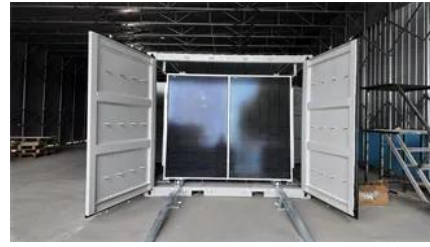


python 3.x

I found two ways to determine how many elements are in a variable I always get the same values for `len ()` and `size ()`. Is there a difference? Could `size ()` have come with an imported

Make just one slide different size in Powerpoint

Make just one slide different size in Powerpoint
Asked 12 years, 2 months ago Modified 5 years, 1 month ago Viewed 195k times



[What does the C++ standard say about the size of int, long?](#)

If the size of the int is that important one can use `int16_t`, `int32_t` and `int64_t` (need the `iostream` include for that if I remember correctly). What's nice about this that `int64_t` should not have issues on a 32bit

The Ultimate Guide to Solar Panel Size, Weight

This comprehensive solar panel size chart includes the most popular residential models from top manufacturers, showing both Imperial and Metric



What's the Average Solar Panel Size and

A typical home solar panel is 65 inches by 39 inches, or 5.5 feet by 3.25 feet, and weighs about 42 pounds. Panels may vary

Change size of axes title and labels in ggplot2

16 To change the size of (almost) all text elements, in one place, and synchronously, `rel()` is quite efficient: `g+theme(text = element_text(size=rel(3.5)))` You might want to tweak the number a bit, to get





Rooftop Solar Panel Size and Layout Guide

The size of a solar panel is mainly determined by the number of cells, encapsulation method, and power rating. Currently, the most common

Solar Panel Size And Weight: A Comprehensive Guide

When considering residential solar panels, typical configurations consist of 60 cells measuring approximately 3.25 feet by 5.5 feet. These panels cover an area of



What's the difference between size_t and int in C++?

In several C++ examples I see a use of the type size_t where I would have used a simple int. What's the difference, and why size_t should be better?

[Solar Panel Size Guide , Best Panel Size for Your Roof](#)

Learn how to choose the ideal solar panel size for your home. Get expert tips, standard dimensions, and a size chart to simplify your solar decisions.



[Photovoltaic Roof Panel Specifications and Dimensions: A Complete](#)

Planning a solar installation? Understanding photovoltaic (PV) roof panel specifications and dimensions is critical for optimizing energy output, cost efficiency, and structural compatibility. This guide breaks

[How Big Are Solar Panels? Here's Their Typical Size](#)

So a typical, residential rooftop solar system with 25 panels would take up about 375 square feet of roof space, but the size of your specific system will depend



[Where do I find the definition of size_t, and what is it used for?](#)

The OP specifically asked Where do I find the definition of size_t? I landed here searching for the same thing. The cited dup does not discuss where to find the declaration.

[What's sizeof\(size_t\) on 32-bit vs the various 64-bit data models?](#)

An individual process in an OS might only be allowed to reserve up to 4GB RAM or less, which means size_t would only need to be 32-bit while pointers are 64-bit. 32-bit wide size_t wouldn't necessarily



Contact Us

For catalog requests, pricing, or partnerships, please visit:
<https://xaviergphoto.es>