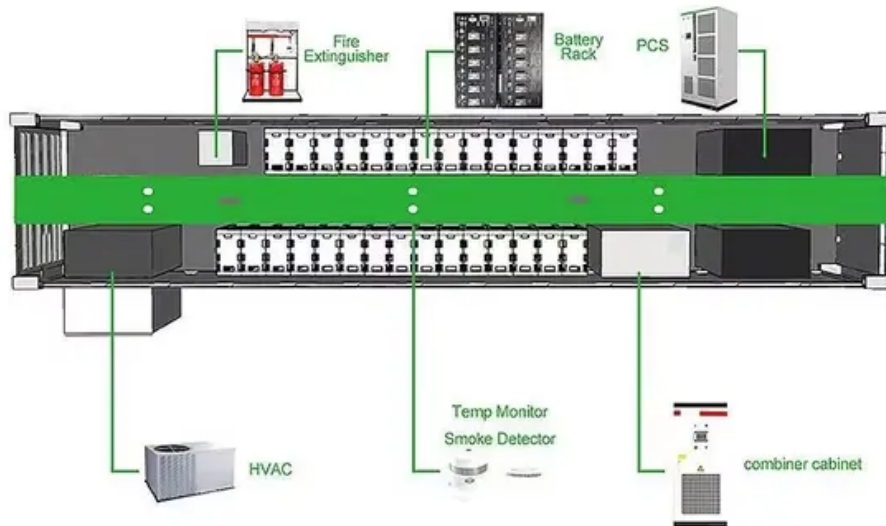


String single-phase inverter



String single-phase inverter



[1-phase string inverter solutions , Infineon Technologies](#)

Single-phase string inverter, a type of PV inverter, convert DC power from series connected solar panels into 110/230 V AC power for residential and commercial

[What is the difference between String\[\] and String in Java?](#)

The convention is to use String[] as the main method parameter, but using String works too, since when you use varargs you can call the method in the same way you call a method with an array as



[What is the difference between String and string in C#?](#)

String stands for System.String and it is a Framework type. string is an alias in the C# language for System.String. Both of them are compiled to System.String in IL (Intermediate

[What is the "String \[\] args" parameter in the main method?](#)

That String[] args part may become optional in future versions of Java. Work is underway to allow for simplified declaration of main method. See JEP 463: Implicitly Declared Classes and



[10kW, GaN-Based Single-Phase String Inverter With Battery](#)



This reference design is intended to show an implementation of a two-channel input single-phase string inverter with fully bidirectional power flow to combine PV input functionality with BESS supporting a

[What does \\$ {} \(dollar sign and curly braces\) mean in a string in](#)

What does \$ {} (dollar sign and curly braces) mean in a string in JavaScript? Asked 10 years, 1 month ago Modified 2 years, 4 months ago Viewed 431k times



What is a Single Phase String Inverter?

What is a Single Phase String Inverter? Solar panels produce electricity, but not the kind your home can use directly. That's where a single

[Single Phase String Inverter , Deye Single Phase On-grid Inverter](#)

This Single Phase on-grid solar string inverter is applicable to single and multiple alignments rooftop. Maximum power models at Deye Inverter.



[difference between new String \[\] {} and new String \[\] in java](#)

String = new String{}; //The line you mentioned above Was wrong because you are defining an array of length 10 (), then defining an array of length 0 ({}), and trying to set them to the same array

How do I compare strings in Java?

String Literals: Moreover, a string literal always refers to the same instance of class String. This is because string literals - or, more generally, strings that are the values of constant expressions



Solis 8KW Single Phase String Inverter

S6-GR1P (7-8)K2 series inverter is designed for residential PV plants. The

[String Inverters for Solar Panels , Shop Best Solar String Inverters](#)

String inverters for solar panels provide efficient power conversion for your PV system. Shop top-rated solar string inverters at the best prices online.



Single-phase , Fimer

Fimer offers a wide range of single-phase string inverters fitting the needs of any household that is looking to save on their energy bills while making an environmental friendly choice.

[Solar Inverters , String Inverters , Energy storage](#)

Single Phase High Voltage Energy Storage Inverter / Up to 4 MPPTs and 16A of DC input current allows for PV array design flexibility / External RSD, EPO



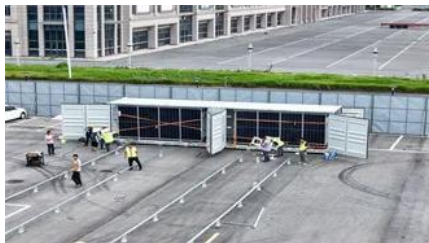
How do I get a substring of a string in Python?

I want to get a new string from the third character to the end of the string, e.g.

myString[2:end]. If omitting the second part means 'to the end', and if you omit the first part, does it

Differences between C++ string == and compare ()?

One thing that is not covered here is that it depends if we compare string to c string, c string to string or string to string. A major difference is that for comparing two strings size equality is checked before



[MPPT String Inverter, Three/Single Phase String Inverter](#)

A string inverter, also known as an on-grid inverter or grid-tied solar inverter, converts DC power from solar panels into AC electricity for

Single-Phase String Inverter Systems Overview

Single-phase string inverter systems convert the DC power generated by the photovoltaic (PV) panel arrays into the AC power fed into a 120 V / 220 V single-phase grid connection.



Contact Us

For catalog requests, pricing, or partnerships, please visit:
<https://xaviergmphoto.es>