

The power supply provides power to the energy storage module



Overview

It means you can store electricity when it's abundant and cheap (e. , during off-peak hours or from midday solar generation) and use it during times of high demand and cost, ensuring a seamless, cost-effective, and reliable power supply.

The power supply provides power to the energy storage module



[The Application of Module Power Supply in Industrial Energy Storage](#)

This article explores the critical role of module power supplies in industrial energy storage systems. It covers global market trends, technical challenges, key selection criteria, and customization needs.

formatDateTime in Power Automate Desktop

You are confusing Power Automate with Power Automate Desktop. The link you provide is for Power Automate, so those functions won't work in the PADesktop. There is an action named



[BESS Components Explained: Every Part You Need to Know](#)

Since batteries store energy as DC but the electrical grid runs on AC, the Power Conversion System (PCS) is essential. The PCS acts as both inverter and charger. It converts AC

power automate

The file should be available in "C:\Program Files (x86)\Power Automate Desktop" s I can see PADnsole.Host.exe in the mentioned folder. Other way of making sure you are checking in



How to Read CSV file using Power Automate?



Get email categories in Microsoft Power Automate

But in Power Automate, if I use the "Send an HTTP Request" action (under "Office 365 Outlook") and send a request to that same endpoint, it returns a lot of the message information but



[Power Automate - Some SharePoint List Columns Not Appearing in](#)

I'm working on a Power Automate flow that updates items in a SharePoint Online list. However, I'm facing an issue where certain columns (including Person/Group fields) are not



Error when Refreshing Power BI Gateway

You can retrieve the contents of the CSV file using the Get file content action in Power Automate/Microsoft Flow, and then using the Parse CSV action to transform the file contents into a



A Comprehensive Guide To Battery Energy Storage

A battery energy storage system is comprised of several essential parts that collaboratively function to store, monitor, and control the energy within



Extract Value from Array in Power Automate

Extract Value from Array in Power Automate
Asked 1 year, 5 months ago Modified 1 year ago
Viewed 8k times

I have been experiencing a periodic refresh issue with multiple BI reports currently sitting on service. These are using gateways to pull data from either/or Analysis services or via a direct SQL

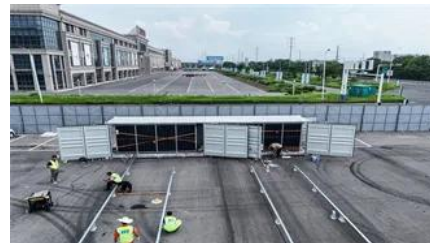


[Power Query code to refer to another query \(and how buffering works\)](#)

Is this just part of the building process? Or If I have one query A that loads across the network and 5 follow up queries that refer to query A will power query / excel be reading the across

Power Automate

I signed out and in multiple times in "power automate". I also opened the "sharepoint app" in Office365 (whatever you're supposed to do with it) which worked fine. The sharepoint connector in



power automate

I am writing a Power automate to copy emails from an Outlook mailbox to SharePoint. I am using Get emails (V3) and want to retrieve emails received on a particular date.

Contact Us

For catalog requests, pricing, or partnerships, please visit:
<https://xaviergphoto.es>