

# What communication modules are used in base stations



## Overview

---

A base station is a fixed point that enables wireless communication between mobile devices and the network.

## What communication modules are used in base stations

---



### [Apollo 11 Communication System: How NASA Talked to the Moon in](#)

The Lunar Module (LM) used S-band communication for transmission from the Moon's surface with specialized equipment: S-band radio for Earth communication VHF radio for astronaut-to-astronaut

### Communication

Communication is commonly defined as the transmission of information. Its precise definition is disputed and there are disagreements about whether unintentional or failed transmissions are included and



### [Base Stations and Cell Towers: The Pillars of Mobile Connectivity](#)

Base stations use antennas mounted on cell towers to send and receive radio signals to and from mobile devices within their coverage area. This communication enables users to make

### COMMUNICATION Definition & Meaning

The meaning of COMMUNICATION is the act or process of using words, sounds, signs, or behavior to express or exchange information or to express thoughts, feelings, etc., to another person.



### What is Communication?



### What are the 7 Types of Communication with Examples

Communication is the lifeblood of human interaction, connecting people from all walks of life. It is the art of exchanging information and ideas between individuals or groups through various

At its foundation, Communication focuses on how people use messages to generate meanings within and across various contexts, and is the discipline that studies all forms, modes, media, and



### Understanding Base Stations in Mobile Communication

In summary, base stations play a multifaceted role in mobile communication by ensuring effective signal transmission and reception, executing seamless

### What Powers Base Station Connectivity? Are CPRI Modules the

CPRI modules are designed exclusively for the fronthaul link between a BBU and an RRU in a wireless base station. Their entire design is optimized for this point-to-point, synchronous



### **What Is Communication? How to Use It Effectively**

Communication is sharing messages through words, signs, and more to create and exchange meaning. Feedback is a key part of communication, and can be given through words or

### [Base Station BBU Unit in the Real World: 5 Uses You'll](#)

Base Station BBU Units, or Baseband Units, are central components in cellular networks. They handle digital signal processing, manage radio



### base transceiver station components

A Base Transceiver Station (BTS) is a fundamental component of a mobile cellular network, responsible for establishing a communication link with

### Communication

The study of Communication focuses on how people exchange information, ideas, and meaning through various forms of communication, including verbal, written, visual, and digital channels.



### What Is a CPRI Wireless Module? Key Applications

Curious about how the core components of a base station communicate so efficiently? The answer lies in a key interface specification -

### Base station subsystem

OverviewBase transceiver stationBase station controllerPacket control unitBSS interfacesSee also



The base transceiver station, or BTS, contains the equipment for transmitting and receiving radio signals (transceivers), antennas, and equipment for encrypting and decrypting communications with the base station controller (BSC). Typically a BTS for anything other than a picocell will have several transceivers (TRXs)

which allow it to serve several different frequencies and different sectors of the cell (in the case of sect

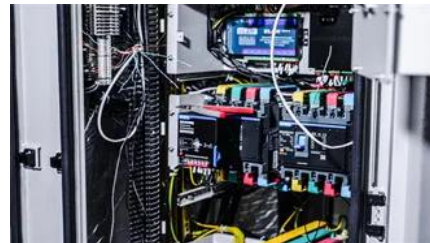


[Communication , Definition, Types, Examples, & Facts , Britannica](#)

Communication, the exchange of meanings between individuals through a common system of symbols. This article treats the functions, types, and psychology of communication.

[What Is Effective Communication? Skills for Work, School, and Life](#)

Effective communication is the process of exchanging ideas, thoughts, opinions, knowledge, and data so that the message is received and understood with clarity and purpose.



[What is Communication: Meaning, Types, Importance and Barriers](#)

Communication is the process of exchange of information, ideas, thoughts, or feelings among individuals or groups. It involves sending and receiving messages through different means, such as verbal,

**8 Ways You Can Improve Your Communication Skills**

These eight tips can help you maximize your communication skills for the success of your organization and your career. 1. Be clear and concise. Communication is primarily about word



**What is a Base Station? - From**



## **Communication Core**

Simply put, a base station (BS) is a wireless transceiver device in a mobile communication network that provides wireless coverage and

## **Contact Us**

---

For catalog requests, pricing, or partnerships, please visit:  
<https://xaviergmphoto.es>