

What is a base station wind power source



Overview

A wind power station, often known as a wind farm, is a facility that converts wind energy into electricity.

What is a base station wind power source

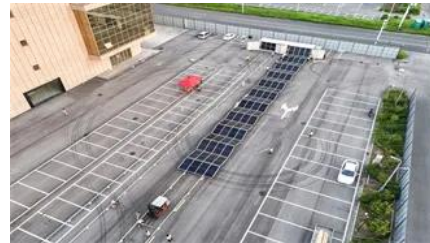


[The main function of base station wind power supply](#)

This project intends to build a system for generating and supplying electricity to the Base Transceiver Station (BTS) that is independent of the main power grid and, if possible,

[Military Microgrids with Renewable Energy and 5G Communication](#)

As a niche application of microgrids, several military base microgrids have been deployed in recent years. Renewable-based microgrids can help the military reduce its petroleum use,



[Powering 5G Base Stations with Wind and Solar Energy Storage: A](#)

This article explores the integration of wind and solar energy storage systems with 5G base stations, offering cost-effective and eco-friendly alternatives to traditional power sources.

[How Do Wind Power Stations Work? A Detailed Look Inside](#)

A wind power station, often known as a wind farm, is a facility that converts wind energy into electricity. These stations are usually made up of many wind turbines strategically located in



[Solution of Mobile Base Station Based on Hybrid System of Wind](#)



Wind power

Wind power is a sustainable, renewable energy source, and has a much smaller impact on the environment than burning fossil fuels. Wind power is variable, so it needs energy storage or other



[Wind Power Construction Of Communication Base Stations](#)

Construction of wind power and solar power generation on communication base stations This article explores practical approaches for achieving resilient mission critical power for remote telecom base



This paper designs a wind, solar, energy storage, hydrogen storage integrated communication power supply system, power supply reliability and efficient energy use through



[Renewable Energy Sources for Power Supply of Base Station Sites](#)

In Hashimoto (2004), an autonomous hybrid system containing a wind turbine and PV panels as the only sources of energy used to power a 3 kW radio base station site on Yonaguni Island, Japan is proposed.



(PDF) Small windturbines for telecom base stations

Every off-grid base station has a diesel generator up to 4 kW to provide electricity for the electronic equipment involved. The presentation will give attention to the requirements on using

Energy Communication Base Station Wind And Solar

Energy of wind and solar complementary to communication base stations Hybrid energy solutions enable telecom base stations to run primarily on renewable energy sources, like solar and wind, with



[Wind power , Description, Renewable Energy, Uses, Disadvantages](#)

Wind power is a form of energy conversion in which

[Wind power , Description, Renewable Energy, Uses, Disadvantages](#)

Wind power is a form of energy conversion in which turbines convert the kinetic energy of wind into mechanical or electrical energy that can be used for power. Wind power is considered a



Contact Us

For catalog requests, pricing, or partnerships, please visit:
<https://xaviergmphoto.es>