

What is the uninterruptible power supply system for communication base stations



What is the uninterruptible power supply system for communication



Do we need to call `set_current_state (TASK`

Yes, you must call `set_current_state()` before calling `schedule()`, because otherwise the scheduler will not remove the task from the run queue (if you just want to potentially allow other tasks

UPS Batteries in Telecom Base Stations - legend

In today's always-connected world, telecom base stations are the backbone of communication networks, ensuring seamless connectivity for



[What are use cases of making Java method UnInterruptible](#)

What are other use cases that we might want to use the same pattern of uninterruptible code?
Edit: I just realised I linked it to incorrect method.
`public static boolean`

[How can I put process into "uninterruptible sleep"?](#)

I'm noticed that process that dumping a core is in uninterruptible sleep, so it can't be killed with SIGKILL, but when I'm trying to emulate this behavior using pipe commands that receives coredump I can



UPS for Communications - Telecom Network Backup



Deliver consistent, reliable connectivity to your customers with an uninterruptible power supply for telecommunications. Mitsubishi Electric UPS keep your

[Uninterrupted Communication: Complete Backup Power Solutions for](#)

For telecom base stations, uninterrupted power is not optional-it's the lifeline of connectivity. Through the right configuration, strict maintenance, and intelligent control, EverExceed ensures every watt of

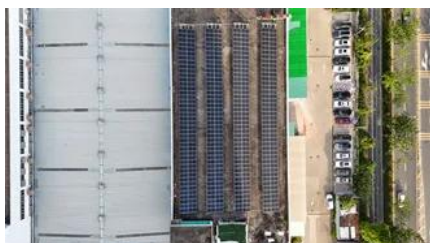


[Uninterruptible Power Supply \(UPS\) , Reliable Off-Grid](#)

EFOY solutions provide off-grid relay stations in hard-to-reach locations with reliable and continuous power to transmit telecommunication signals even in

[Many open files leading to uninterruptible sleep "D state"](#)

An uninterruptible D state is entered when a disk driver is seeking for some data in the disk and the disk has to be waited for for the process to continue. Normally a process sticking on a D



[Does read/write blocked system call put the process in TASK](#)

The Uninterruptible state is mostly used by device drivers waiting for disk or network I/O. When the process is sleeping uninterruptibly, signals accumulated during the sleep are noticed when

[TASK_UNINTERRUPTIBLE and process threads in linux kernel](#)

I have a running process which has created multiple user mode threads. If the kernel changes the state of the process to TASK_UNINTERRUPTIBLE (or TASK_INTERRUPTIBLE) do the



how to find out what it is waiting for

When looking at the process with "ps ax" the stat column is "DI" which means "uninterruptible sleep (usually IO)". Is it possible to find out more details on what the process is

[Why there is a state called 'TASK_UNINTERRUPTIBLE' in Linux](#)

Another question is, if we enable PREEMPT then the linux kernel become a preemptive kernel so at any place when we are handling a syscall in the kernel mode, it may be preempted so



[Requirements for UPS Power Supply in Communication Base Stations](#)

The UPS power supply for base stations is an essential component of the entire communication power system. It is widely used in the communication industry due to its high power

How to stop 'uninterruptible' process on Linux?

I have a VirtualBox process hanging around which I tried to kill (KILL/ABORT) but without success. The parent pid is 1 (init). top shows the process as D which is documented as "uninterruptible sl



Contact Us

For catalog requests, pricing, or partnerships, please visit:
<https://xaviergmphoto.es>