

What is the voltage of a 120 watt photovoltaic panel



What is the voltage of a 120 watt photovoltaic panel



[What is "forward" and "reverse" voltage when working with diodes?](#)

The reverse voltage is the voltage drop across the diode if the voltage at the cathode is more positive than the voltage at the anode (if you connect + to the cathode). This is usually much

What exactly is voltage?

The total voltage you get from one out and back, even with a high temperature difference is pretty small. By putting many of these out and back combinations together, you can get a useful voltage. A single



What Voltage My Solar Panel Produces (Calculations)

The voltage of a solar panel is the result of individual solar cell voltage, the number of those cells, and how the cells are connected within the

[How is it possible to have high voltage and low current? It seems to](#)

7 One word: Resistance. Recall that Voltage is calculated by multiplying the current by the resistance. You can have a high potential difference (which is what voltage is), and a low current,



[All You Need to Know about Amps, Watts, and Volts in](#)



Watts to Volts Calculator for Solar Power Systems

In this guide, we will walk you through the process of converting watts to volts, offer real-world examples, and explain how this knowledge is crucial for solar panel

Understand Amps, Watts, and Volts in Solar energy systems with our comprehensive guide. Learn how these key electrical units impact solar power



Understanding Solar Panel Voltage: A Comprehensive

This guide delves into the intricacies of solar panel voltage, from basic concepts to detailed specifications of various wattage panels, providing a

Solar Panel Output Voltage: How Many Volts Do PV

To be more accurate, a typical open circuit voltage of a solar cell is 0.58 volts (at 77°F or 25°C). All the PV cells in all solar panels have the same 0.58V voltage.

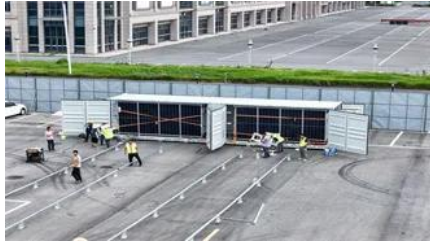


How to reduce DC voltage using resistors?

How would one go about using a 12 V DC power source to power something which needs 4.5 V DC using resistors? Is there a way to determine how much adding a resistor would drop the

Solar Panel Voltage Calculator

Definition: This calculator determines the voltage output of a solar panel based on its power output and current. Purpose: It helps solar energy professionals and DIY enthusiasts understand the electrical



Solar Panel Voltage Chart Guide

A solar panel voltage chart gives you a clear picture of the electrical output of different solar panels, helping you choose the right panel for your

Solar Panel Voltage Chart: Understanding Voltage

This solar panel voltage chart will help you understand how voltage changes in different circumstances, and explain some terms you might not



What, exactly, is voltage?

We say that voltage is like pressure, or like gravitational potential energy, because we're trying to draw an analogy to something that you can see or feel (because you can drop a rock on

[How to calculate voltage drop over and power loss in wires](#)

How do I calculate the voltage drop over wires given a supply voltage and a current? How do I anticipate on voltage drop so that the final load has the correct supply voltage? What will be the power



What Can You Power with One 120 Watt Solar Panel



[How are current and voltage related to torque and speed of a](#)

Voltage instead "regulates" how fast a motor can run: the maximum speed a motor can reach is the speed at which the motor generates a voltage (named "Counter-electromotive force")



[Do electrons actually flow when a voltage is applied?](#)

The important thing is this: charge carriers (electrons being one of such) can be used to transmit an electromotive force (usually called just voltage). This is a pretty ordinary concept, really.



We know that taking the volts times amps equals the watts. So if we use the maximum operating voltage of 18.4 volts and multiply that by the



Solar Panel Output Voltage: 2025 Complete Guide

Solar panel output voltage typically ranges from 5-40 volts for individual panels, with system voltages reaching up to 1500V for large-scale installations. The exact



How much voltage/current is "dangerous"?

Likewise, if the current and voltage are below a certain level, a person can--given enough time--safely absorb an arbitrarily large amount of electrical energy. Further, if voltage is sufficiently low, the

[Is it okay to use a power supply that provides slightly more voltage](#)

Any device will only draw as much current as it needs, so long as its power source can supply it. However, the laptop adapter's voltage is a full volt above the specified 18 V; this will cause more



Contact Us

For catalog requests, pricing, or partnerships, please visit:
<https://xaviergmphoto.es>